

State of Wyoming Corner Record

(In compliance with the CORNER PERPETUATION AND FILING ACT, Wyoming Statutes, 1997 Section 33-29-140 et. seq., and the Rules and Regulations of the Board of Professional Engineers and Professional Land Surveyors)

Reverse side of this form may be used if more space is needed.

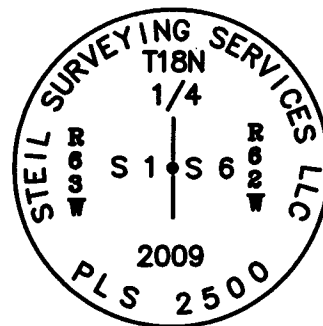
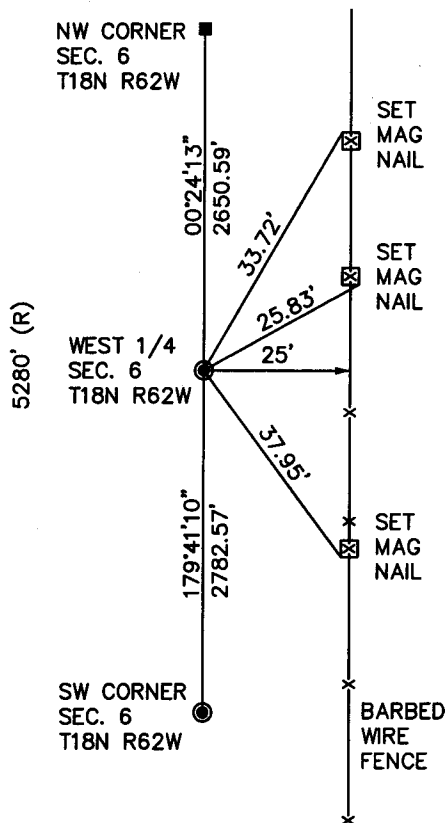
Record of original survey and citation of source of historical information (if corner is lost or obliterated). Description of corner monumentation evidence found and/or monument and accessories established to perpetuate the location of this corner. Sketch of relative location of monument, accessories, and reference points with course and distance to adjacent corner(s) (if determined in this survey). Method and rationale for reestablishment of lost or obliterated corner.

RECORD: SET A SANDSTONE 18" X 12" X 3", 12" DEEP MARKED 1/4 ON WEST SIDE FOR 1/4 SECTION CORNER.

MONUMENT FOUND: NOTHING FOUND.

MONUMENT SET: SET A 5/8" X 24" REBAR WITH A 3 1/4" ALUMINUM CAP PROJECTING 0.4' ABOVE GROUND SURFACE SURROUNDED BY A MOUND OF STONE WITH THE CAP STAMPED AS SHOWN. IT IS OUR BELIEF THAT THERE WAS A TWO CHAIN ERROR SOUTH OF THE CREEK BECAUSE OF THE TOPO CALLS.

REFERENCES: MONUMENT LIES 24' NORTH OF THE NORTH BANK OF HORSE CREEK AND 25' WEST OF N-S FENCE. SET MAG NAILS FOR REFERENCE. MONUMENT WAS SET BY SINGLE PROPORTION AND THE TOPO CALLS FOR HORSE CREEK.



Date of Field Work: 12/1/09

Office Reference: 09305

Monument Inscription

Cross Index Plat

	1	2	3	4	5	6	7	8	9	10	11	12	13	14	15	16	17	18	19	20	21	22	23	24	25
A																									
B	+	+	+	+	+	+	+	+	+	+	+	+	+	+	+	+	+	+	+	+	+	+	+	+	+
C		6			5				4					3					2						1
D																									
E																									
F																									
G																									
H																									
I																									
J																									
K																									
L																									
M																									
N																									
O																									
P																									
Q																									
R																									
S																									
T																									
U																									
V																									
W																									
X																									
Y																									
Z																									

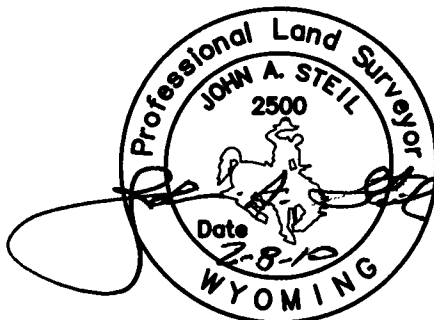
Firm/Agency, Address

STEIL SURVEYING SERVICES LLC
1102 WEST 19th STREET
CHEYENNE WY 82001

Telephone Number: **(307) 634-7273**

This corner record was prepared by me or under my direction and supervision.

SEAL & SIGNATURE



Corner Name EAST 1/4 Section 1, T 18 N, R 63 W, 6th P.M.

Cross-Index No.: C-25

County: LARAMIE Wyoming

SBRPEPLS/PLSW: March 1994; PLSW January 1998